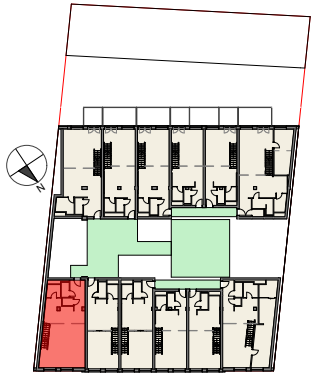


Vorentwurf Wohnbau Pitkagasse 4, 1210 Wien

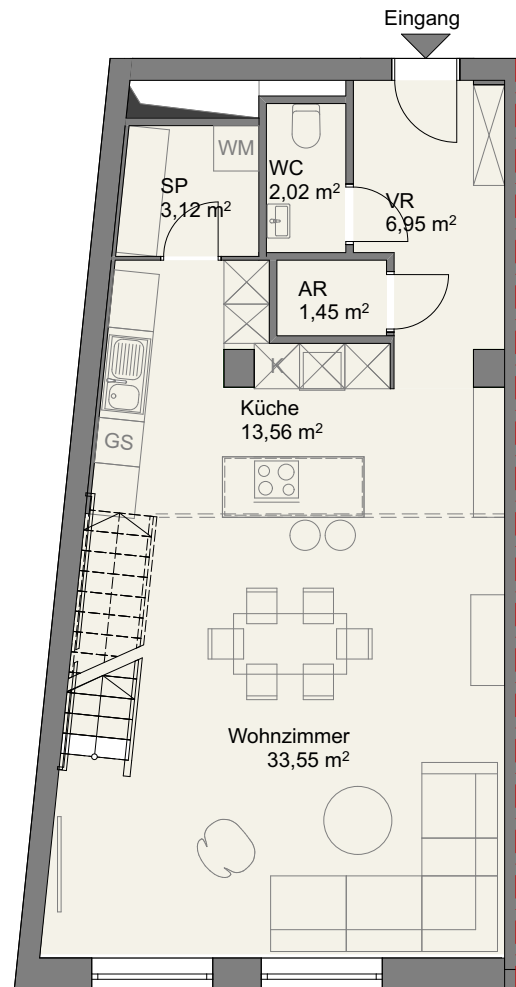


Lageplan
1.Obergeschoss

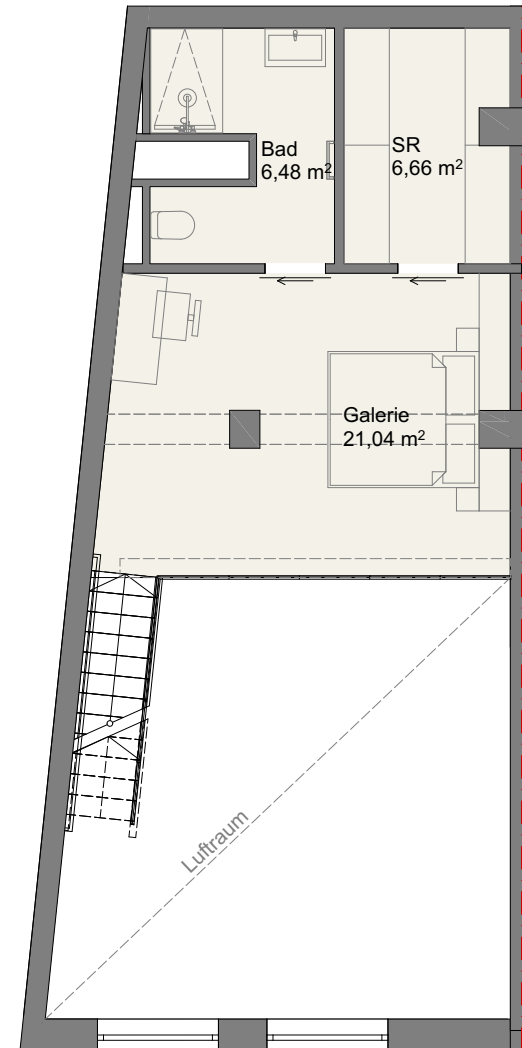
Top 18

Flächen

| | |
|-------------------|--------------------------------|
| NGF: Wohnebene | ca. 60,60 m ² |
| NGF: Galerie | ca. 34,10 m ² |
| NGF Summe: | ca. 94,70 m² |



1.Obergeschoss



2.Obergeschoss/Galerie